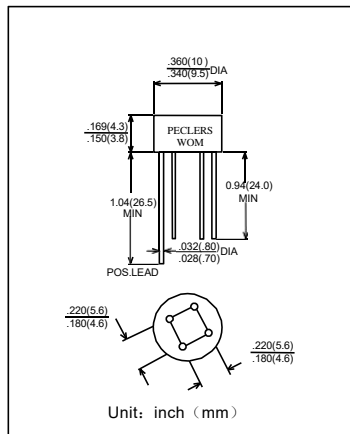


### General Purpose Plastic Bridge Rectifier

Reverse Voltage 50 to 1000 V

Forward Current 2.0 A



### Features

- Low reverse leakage
- 60 A Surge overload rating: 60 Amperes peak
- High temperature soldering guaranteed:  
260°C/10 秒, 0.375" (9.5mm) 引线长度。  
260°C/10seconds, 0.375" (9.5mm) lead length,
- 5 lbs. (2.3kg) tension
- 引线 and 管体皆符合RoHS标准。  
Lead and body according with RoHS standard

### Mechanical Data

- Case: Molded Plastic
- Polarity: As marked

Maximum Ratings & Thermal Characteristics Ratings at 25°C ambient temperature unless otherwise specified.

|   | Symbols         | 2W005<br>G   | 2W01G | 2W02G | 2W04G | 2W06<br>G | 2W08G | 2W10<br>G | Unit |
|---|-----------------|--------------|-------|-------|-------|-----------|-------|-----------|------|
| Maximum repetitive peak reverse voltage                 | $V_{RRM}$       | 50           | 100   | 200   | 400   | 600       | 800   | 1000      | V    |
| Maximum RMS voltage                                     | $V_{RMS}$       | 35           | 70    | 140   | 280   | 420       | 560   | 700       | V    |
| Maximum DC blocking voltage                             | $V_{DC}$        | 50           | 100   | 200   | 400   | 600       | 800   | 1000      | V    |
| Maximum average forward rectified current               | $I_{F(AV)}$     | 2.0          |       |       |       |           |       |           | A    |
| Peak forward surge current 8.3 ms single half sine-wave | $I_{FSM}$       | 60           |       |       |       |           |       |           | A    |
| Typical thermal resistance                              | $R_{\theta JA}$ | 40           |       |       |       |           |       |           | °C/W |
| Operating junction temperature range                    | $T_j$           | -55 --- +125 |       |       |       |           |       |           | °C   |
| Storage temperature range                               | TSTG            | -55 --- +150 |       |       |       |           |       |           | °C   |

Electrical Characteristics Ratings at 25°C ambient temperature unless otherwise specified.

|  | Symbols | 2W005<br>M | 2W01<br>M | 2W02M | 2W04M | 2W06M | 2W08M | 2W10M | Unit    |
|--|---------|------------|-----------|-------|-------|-------|-------|-------|---------|
| Maximum forward voltage $I_F = 2.0A$                                 | $V_F$   | 1.1        |           |       |       |       |       |       | V       |
| Maximum reverse current<br>$T_A = 25^\circ C$<br>$T_A = 125^\circ C$ | $I_R$   | 10<br>500  |           |       |       |       |       |       | $\mu A$ |
| $V_R = 4.0V, f = 1MHz$<br>Type junction capacitance                  | $C_j$   | 24         |           |       |       |       |       |       | pF      |

### Characteristic Curves

